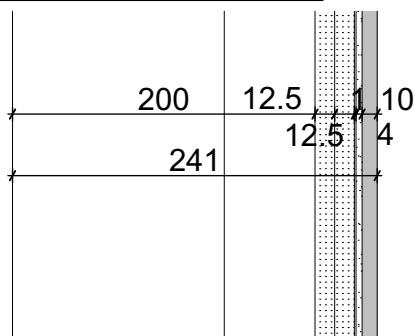


# PRE-WALL WA5

SC 1:5



## COMPOSITION OF PRE-WALL WALL

| N | FUNCTION        | MATERIAL SPECIFICATION   | STABILIZATION                        | THICKNESS |
|---|-----------------|--|--------------------------------------|-----------|
| 1 | GAP/ CARRYING   | INSTALLATION GAP<br>space for necessary sanitary instalations<br><br>BEARING SYSTEM<br>metal profile structure   | -<br><br>mechanically<br>anchored    | 200       |
| 2 | GYPSUM BOARD    | GYPSUM BOARD<br>coefficient of thermal conductivity $\lambda_u$ 0.21W/m*K, fire reaction class A2-s1,d0,<br>diffusion resistance factor $\mu$ 6-10, longitudinal expansion factor in case of<br>humidity change $5-8 \cdot 10^{-6}$ , compressive strength 5.0 - 10.0 MPa          | mechanically<br>anchored             | 2x12.5    |
| 3 | PENETRATION     | ACRYLIC PRIMER<br>ready to use acrylic based primer, temperature range (+5°C)-(+35°C), minumum<br>drying time 45-60 minutes, pot life 20 minutes, consumption 150 gr/m², 2 layers<br>needed  | roller, brush or<br>spraying machine | -         |
| 4 | WATERPROOFING   | ACRYLIC EMULSION BASED, ONE COMPONENT ELASTIC<br>WATERPROOFING<br>curing time 4 hours, consumption 1.5 kg/m², 3 layers, tensile strength $\geq 0.8$<br>N/mm², tensile adhesion strength $\geq 0.8$ N/mm², water-vapour permeability class<br>I, equivalent air thickness $S_d < 5$ | brush or roller                      | 1.0       |
| 5 | TILE ADHESIVE   | CEMENTITIOUS ADHESIVE WITH EXTENDED OPEN TIME AND<br>REDUCED SLIP<br>curing time 24 hours, consumption 3-5 kg/m², 4 mm in case of 30x30cm tiles,<br>tensile adhesion strength $\geq 1.0$ N/mm², fire reaction class A1, slip $>0.5$ N/mm²  | stainless steel trowel               | 4.0       |
| 6 | SURFACE FINISH  | CERAMIC TILES<br>dimenstions 30 x 30 cm, coefficient of thermal conductivity $\lambda_u$ 1.01W/m*K,<br>diffusion resistance factor $\mu > 0.5$ , anti-slip R11   | -                                    | 10        |
| 7 | GROUTING MORTAR | FLEXIBLE GROUTING MORTAR<br>curing time 24 hours, flexural strength $\geq 2.5$ N/mm², compressive strength $\geq 15$<br>N/mm²  | rubber trowel                        | -         |

### NOTES:

- 3 painted on clean, flat (maximal deviation 30 mm), dry, degreased surface in temperatures higher than 5 degrees
- 5 corners have to be treated by butyl tape, width 100 mm before placing of the adhesive